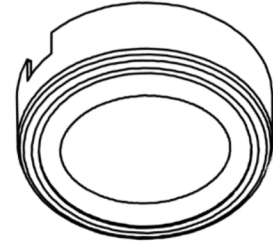


STUDIO•M

SM563835

Please consult your electrician for hanging fixture and wiring.

CounterMax MX-LD-AC RECESS/SURFACE LIGHT



IMPORTANT : Please read these instructions before commencing installation and retain for future reference.

Important Safety Information

Please read these instructions carefully before attempting to install this product. It is advisable to keep these instructions in a safe place for further reference.

WARNING: These products may represent a possible shock or fire hazard if improperly installed or attached in any way. Products should be installed in accordance with these instructions, current electrical codes and/or the current National Electric Code (NEC).

WARNING: To avoid electrical shock, disconnect or disable power at the source prior to installation or maintenance.

WARNING: To avoid electrical shock, use only with 120V AC plug-in power supply or with 120V AC hardwire power supply.

Factory warranty will be void if used with a non-recommended power supply, transformer, or driver.

Risk of shock or fire hazard:

The maximum number of pucks that can be interconnected to a power cord, or to a port on the hardwire box is 20. Do not exceed in any single run. Each puck consumes 4.3 watts.

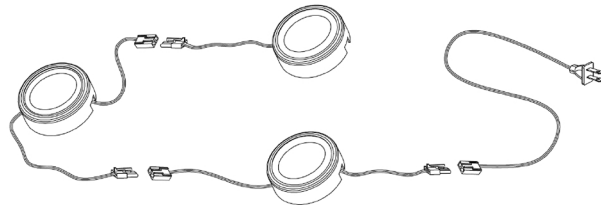
Safety Instructions

1. The CounterMax MX-LD-AC Puck is listed c/ETL/us and intended for indoor use in dry locations only. Do not use in the vicinity of standing water or liquids. Do not submerge in water or liquids.
2. Do not use if there is any damage to the unit or to the power cord's insulation. Inspect periodically.
3. Do not route cords or units through walls, doors, windows or any similar part of a building structure.
4. Do not secure unit or its power cord with staples, nails, or any other sharp objects that may damage the cords.
5. Please read and understand these instructions before beginning installation.

Prior To Installation

CounterMax MX-LD-AC LED 3-pack Kits include three LED Pucks, a 6' plug-in 120V power cord and mounting hardware. To extend a three puck kit, purchase single to reach the quantity needed, up to twenty. Single puck kits contain a puck with only a lead wire and so this puck has to be the last puck in a series.

Determine the quantities and locations of CounterMax MX-LD-AC Pucks needed, and whether pucks will be surface mounted or recessed. CounterMax MX-LD-AC Pucks use the "Daisy Chain" System for power input.



STUDIO•M

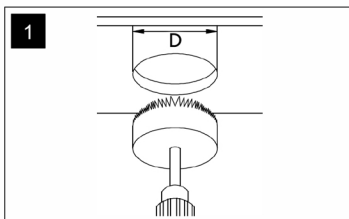
SM563835

Please consult your electrician for hanging fixture and wiring.

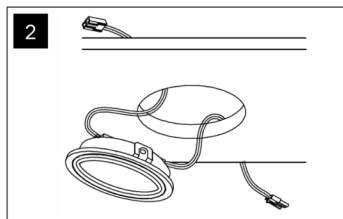
CounterMax MX-LD-AC RECESS/SURFACE LIGHT

Installation

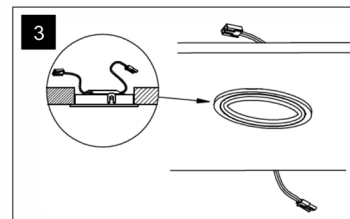
RECESSING



1 Drill an installation hole of 2-3/8" Ø

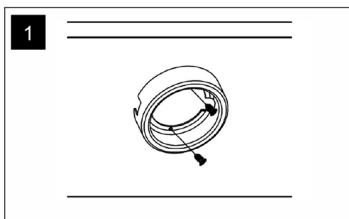


2 Feed the attached cables through the cut hole and fix the recessed light to place.

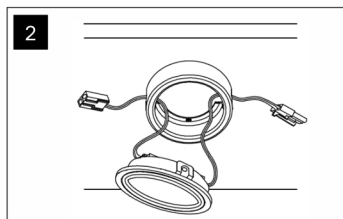


3 Making sure the lead wires are not pinched or crimped in any way.

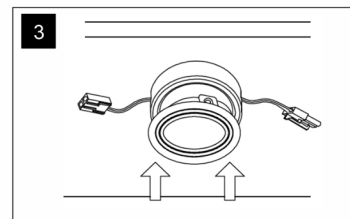
SURFACE MOUNTING



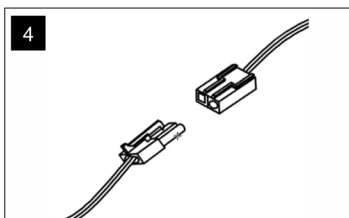
1 Fix the collar to the unit using 2 fixing screws



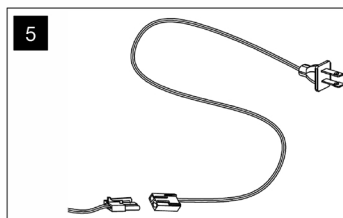
2 Feed the attached cables through the hole on the collar.



3 Push the lamp back into the collar as before

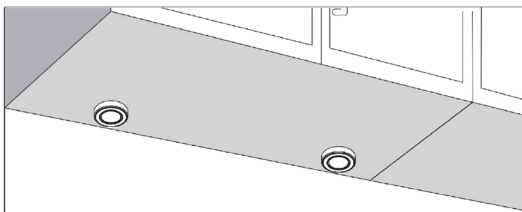


4 Connect the lead wires between multiple pucks.



5 Finally wire the power cord to 120v mains supply.

Operation



The CounterMax MX-LD-AC Pro LED recessed and surface lights are linkable 20 pucks to a single power supply, easy to facilitate custom layouts

Maintenance & Care

Ensure that the power is disconnected prior to cleaning.
To keep the finish of this product, wipe over with soft cloth periodically.
Do not use harsh chemical solvents, it may dis-colour or damage the finish.