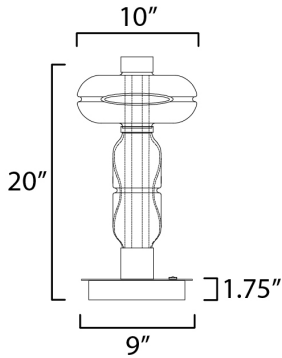




PRODUCT DESCRIPTION

Futuristic and full of Gusto, the capsule collection designed by Cesar Giraldo features artisanal hand-blown glass elements colored in cloud-like white infused glass or gradients of smoked grey and warm amber tones. The glasses' hand-crafted dimples refract dedicated LED lighting that highlights an undulating silhouette throughout the fixture. Diffused evenly across a thin tube of white acrylic encased within a larger vacuum of clear glass, the airy compositions appear to be floating while amply filling spaces. Configurations include both horizontal and linear pendants, ceiling mounts, wall sconces and portable lamps sized for multiple applications. Available in metal accents finished in Gunmetal or Gold.



MEASUREMENTS

DIMENSION : 10" L x 10" W x 20" H
 CANOPY : 9" W x 1.75" H x 9" L
 HANGING WEIGHT : 15.4 lb

LAMPING

INPUT VOLTAGE : 120-277V
 LUMENS : 840 Rated (670 Del.)
 BULB : 9.5W LED DC Integrated , 10W Total
 BULB INCLUDED : (Integrated)
 DIMMABLE : Universal 3-in-1
 CRI : 90 CRI
 COLOR_TEMP : 3000K

FINISHES OPTION

- Gold (GLD)
- Gunmetal (GM)

GLASS

Fog FG

MATERIAL

Aluminum, Glass

RATINGS

cETLus
 Dry Location



ADDITIONAL

RATED LIFE 30000 Hours
 OPERATING TEMPERATURE:
 -20°C (-4°F), 40°C (104°F)

Always consult a qualified electrician before installing any lighting product.

STUDIO•M

Modifications or Customizations: Please email contract@studiomlighting.com
 Sample Request: Please email order@studiomlighting.com with subject line
 "Sample Order_ [Project Name] / [Specifier/Designer]"
 All samples are subject to Studio M approval and must show proof of project and/or explanation.

Job Name:	Job Type:
Quantity:	Comments: