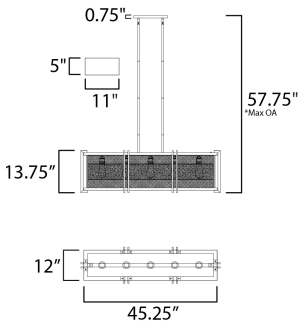


**PRODUCT DESCRIPTION**

Frames of wood finished in Barn Wood and cradled by Black metal brackets were used to create this beautiful rustic design. The Black mesh screen is accented with a band of mica and Antique Brass sockets to deliver rustic charm with all the right fixings.



**MEASUREMENTS**

DIMENSION : 45.25" L x 12" W x 13.75" H  
 MAX OAH : 57.75" OAH  
 CANOPY : 5" W x 0.75" H x 11" L  
 HANGING WEIGHT : 25.08 lb

**LAMPING**

INPUT VOLTAGE : 120V  
 BULB : 60W Incandescent E26 Medium , 300W Total  
 BULB INCLUDED : (Not Included)  
 DIMMABLE :

**FINISHES OPTION**

Black / Barn Wood / Antique Brass (BKBWAB)

**MATERIAL**

Steel, Wood, Mica

**RATINGS**

cULus  
 Dry Location



**ADDITIONAL**

ADJUSTABLE  
 SLOPE: 90  
 OPERATING TEMPERATURE:  
 -20°C (-4°F), 40°C (104°F)

Always consult a qualified electrician before installing any lighting product.



**Modifications or Customizations:** Please email [contract@studiomlighting.com](mailto:contract@studiomlighting.com)  
**Sample Request:** Please email [order@studiomlighting.com](mailto:order@studiomlighting.com) with subject line "Sample Order\_ [Project Name] / [Specifier/Designer]"  
 All samples are subject to Studio M approval and must show proof of project and/or explanation.

Job Name:	Job Type:
Quantity:	Comments: