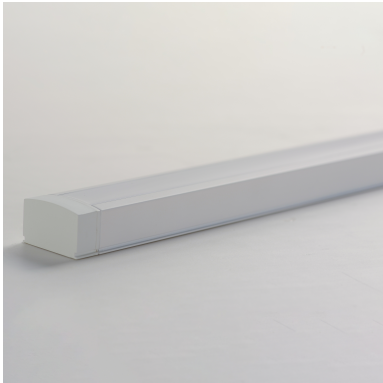
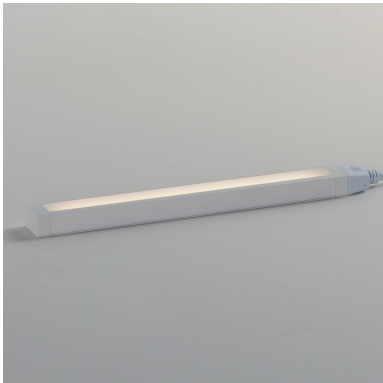


CounterMax 120V Slim Stick |
SM868951WT

Job Name: _____ Job Type: _____ Quantity: _____ Comments: _____



PRODUCT DESCRIPTION

An innovative, slim channel LED light bar. The 120V input Slim Stick connects to a slim direct wire installation junction box where brightness and white color tunable LED light can be adjusted with the touch of a button. The control is the first in the industry to provide color temperature control variable between 2700-5000k on a driverless 120V LED strip. Included with the product, mounting clips allow the user install the channels flat or at an angle up to 90 degrees, so the product can be used in more applications such as cove, task, and closet lighting.

MEASUREMENTS

DIMENSION : 12" L x 1.5" W x 0.75" H
HANGING WEIGHT : 0.374 lb

LAMPING

INPUT VOLTAGE : 120V
LUMENS : 600 Rated (322 Del.)
BULB : 6W LED PCB Integrated , 6W Total
BULB INCLUDED : (Integrated)
DIMMABLE : Y
CRI : 90 CRI
COLOR_TEMP : 2700-5000K

FINISHES OPTION

-  Bronze (BZ)
-  White (WT)

MATERIAL

Aluminum + LED + PC

RATINGS

cETLus
Dry Location



ADDITIONAL

RATED LIFE 35000 Hours
OPERATING TEMPERATURE:
-20°C (-4°F), 40°C (104°F)

Always consult a qualified electrician before installing any lighting product.

STUDIO•M

Modifications or Customizations: Please email contract@studiomlighting.com
Sample Request: Please email order@studiomlighting.com with subject line
"Sample Order_ [Project Name] / [Specifier/Designer]"
All samples are subject to Studio M approval and must show proof of project and/or explanation.

Job Name:	Job Type:
Quantity:	Comments

StudioMlighting.com - 1.626.956.4209