

**PRODUCT DESCRIPTION**

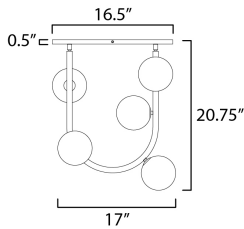
Make Nina Magon's Contour pendants your own! This configuration will allow you to customize the size, LED lamp color, and best of all Made-to-Order powder coat finishes. Choose from our recommended library of curated finishes selected by Nina such as Oxford White, Stratton Blue, Taupe, or Palazzo Pink as seen in the highly regarded work of Nina Magon at the Kips Bay Design House in West Palm Beach. If a custom configuration or finish is not shown, please reach out to our specialized Concierge team and we'll contact you within 24 hours! With Made-to-Order options, get greater design flexibility on an already beloved collection.

**MEASUREMENTS**

DIMENSION : 17" L x 10.75" W x 20.75" H  
 CANOPY : 4.75" W x 0.5" H x 16.5" L  
 HANGING WEIGHT : 5.04 lb

**LAMPING**

INPUT VOLTAGE : 120V  
 LUMENS : 2,000 Rated (1,750 Del.)  
 BULB : 4W LED G9 , 20W Total  
 BULB INCLUDED : (Included)  
 DIMMABLE : Y  
 CRI : 90 CRI  
 COLOR\_TEMP : 3000K



**FINISHES OPTION**

- Palazzo Pink (PP)
- Stratton Blue (SB)
- Taupe (TP)
- White (WT)

**MATERIAL**

Steel

**RATINGS**

cETLus  
 Dry Location  
 CA Title 24



**ADDITIONAL**

SLOPE:  
 RATED LIFE 25000 Hours  
 OPERATING TEMPERATURE:  
 -20°C (-4°F), 40°C (104°F)

Always consult a qualified electrician before installing any lighting product.



**Modifications or Customizations:** Please email [contract@studiomlighting.com](mailto:contract@studiomlighting.com)  
**Sample Request:** Please email [order@studiomlighting.com](mailto:order@studiomlighting.com) with subject line "Sample Order\_ [Project Name] / [Specifier/Designer]"  
 All samples are subject to Studio M approval and must show proof of project and/or explanation.

Job Name:	Job Type:
Quantity:	Comments: