

PRODUCT DESCRIPTION

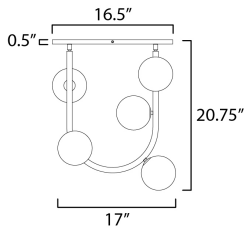
Make Nina Magon's Contour pendants your own! This configuration will allow you to customize the size, LED lamp color, and best of all Made-to-Order powder coat finishes. Choose from our recommended library of curated finishes selected by Nina such as Oxford White, Stratton Blue, Taupe, or Palazzo Pink as seen in the highly regarded work of Nina Magon at the Kips Bay Design House in West Palm Beach. If a custom configuration or finish is not shown, please reach out to our specialized Concierge team and we'll contact you within 24 hours! With Made-to-Order options, get greater design flexibility on an already beloved collection.

MEASUREMENTS

DIMENSION : 17" L x 10.75" W x 20.75" H
 CANOPY : 4.75" W x 0.5" H x 16.5" L
 HANGING WEIGHT : 5.04 lb

LAMPING

INPUT VOLTAGE : 120V
 LUMENS : 2,000 Rated (1,750 Del.)
 BULB : 4W LED G9 , 20W Total
 BULB INCLUDED : (Included)
 DIMMABLE : Y
 CRI : 90 CRI
 COLOR_TEMP : 3000K



FINISHES OPTION

- Palazzo Pink (PP)
- Stratton Blue (SB)
- Taupe (TP)
- White (WT)

MATERIAL

Steel

RATINGS

cETLus
 Dry Location
 CA Title 24



ADDITIONAL

SLOPE:
 RATED LIFE 25000 Hours
 OPERATING TEMPERATURE:
 -20°C (-4°F), 40°C (104°F)

Always consult a qualified electrician before installing any lighting product.



Modifications or Customizations: Please email contract@studiomlighting.com
Sample Request: Please email order@studiomlighting.com with subject line "Sample Order_ [Project Name] / [Specifier/Designer]"
 All samples are subject to Studio M approval and must show proof of project and/or explanation.

Job Name:	Job Type:
Quantity:	Comments: